

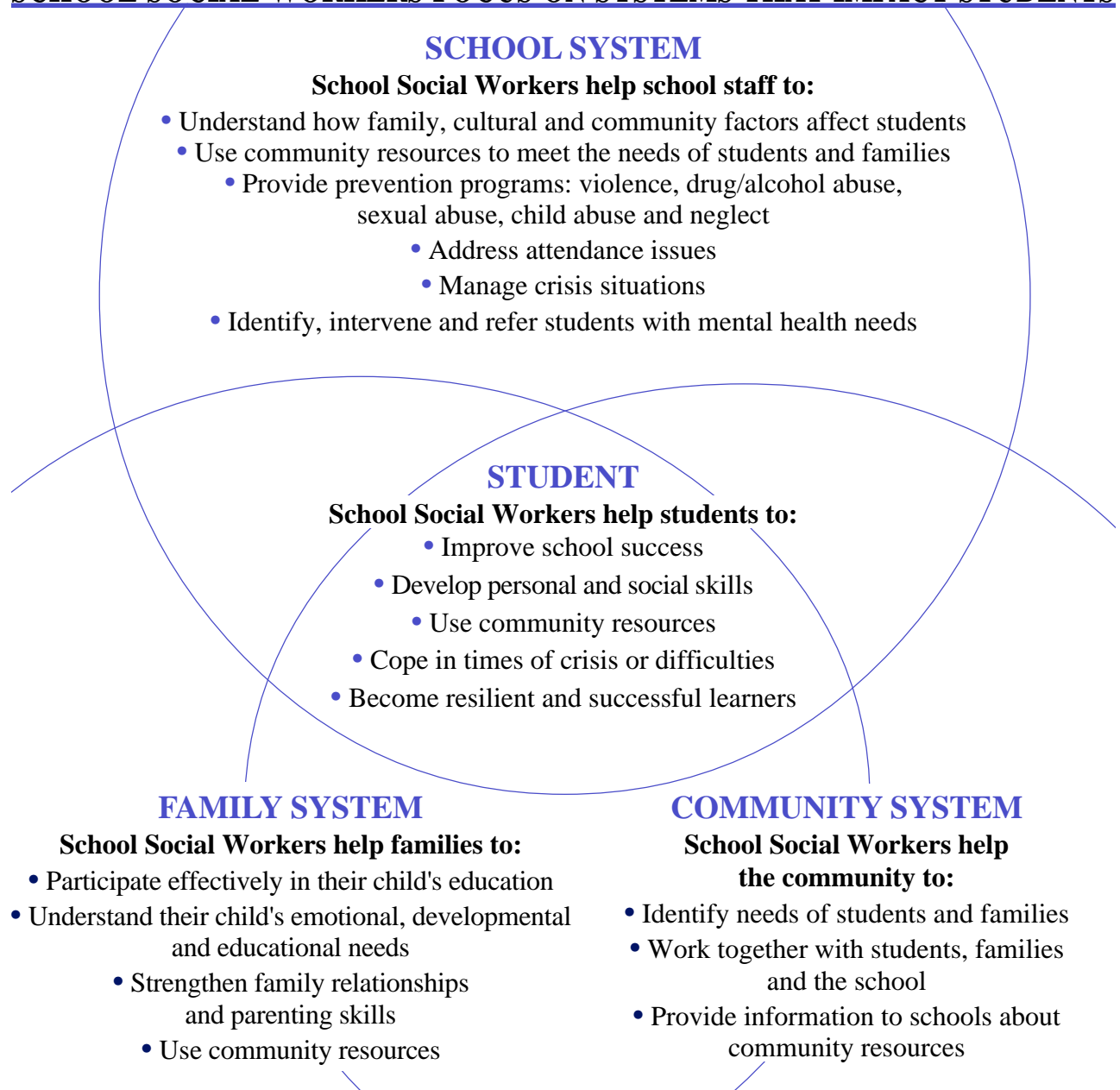
# SCHOOL SOCIAL WORKERS FOCUS ON SYSTEMS THAT IMPACT STUDENTS

➤ *School Social Workers* are employed by Lincoln Public Schools to support the mission of success for all students.

➤ *School Social Workers* bring unique professional knowledge, skills and perspective to the school system. Social Work values basic human rights and the worth of individuals, including the right to self-identify problems, needs and goals.

➤ *School Social Workers* actively intervene to address barriers that affect the student's ability to learn.

➤ *School Social Workers* assist students, families and schools to identify needs and facilitate positive change.



# REMOVING BARRIERS TO LEARNING



**School Social Workers focus on barriers to student success including:**

Family Issues  
Grief  
Mental Health  
Stress  
Substance Abuse  
Trauma  
Violence

**School Social Workers use a team approach as they work with:**

Administrators  
Counselors  
Community Agencies  
Family Members  
School Nurses  
School Psychologists  
Teachers

**School Social Workers accept referrals from:**

School Staff  
Family Members  
Students

**School Social Workers can be contacted through the school office or by contacting Student Services, 436-1658.**



5901 O Street • Lincoln, NE 68510

*An Equal Opportunity/Affirmative Action Employer*

Mailing address: P.O. Box 82889 • Lincoln, NE 68501-2889

S  
C  
H  
O  
O  
L  
  
S  
O  
C  
I  
A  
L  
  
W  
O  
R  
K



## Connecting Schools, Families & the Community

- Supporting and working with school staff
- Providing mental health services for students and families
- Leading prevention programs
- Promoting home-school communication
- Connecting families with community resources
- Providing crisis intervention
- Advancing awareness of social issues